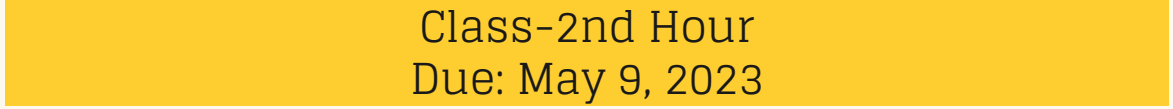
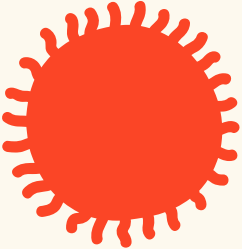




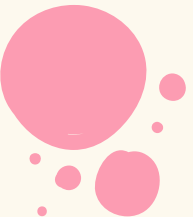
Epidemiologist

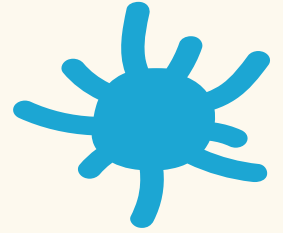
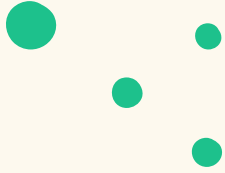


Lorelai



Class-2nd Hour
Due: May 9, 2023





What does an epidemiologist do?

Epidemiologists collect and analyze data to investigate health issues. For example, an epidemiologist might study demographic data to determine groups at high risk for a particular disease. They also may research trends in populations of survivors of certain diseases, such as cancer, to identify effective treatments.

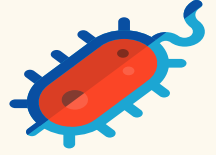
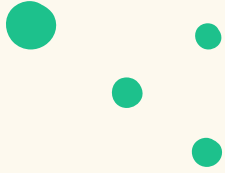




Required Training

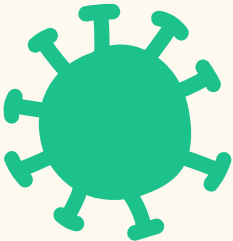
Epidemiologists typically need at least a master's degree to enter the occupation. They may have a master's degree in public health (MPH) or a related field, and some have completed a doctoral degree in epidemiology or medicine.





How does an epidemiologist use math

Epidemiology combines science and mathematics to study the distribution of disease within a population and the factors that influence disease. At its core, epidemiology uses basic math skills to determine the distribution and cause of diseases.



Typical Day



Job duties of an epidemiologist typically revolve around gathering medical and health information from the field, research or historical data, analyzing the data collected and presenting the findings. The findings can then be used to develop public health initiatives or discover how diseases originate, spread and can be treated. Even though humans are living longer and many diseases are no longer harming humanity the way they used to, epidemiologists are still important today. For example, diseases that were previously considered “extinct” are now making a comeback, such as measles.





CDC

The CDC is a part of the department of Health and Human Services. The CDC works to protect people from health threats. The CDC has many offices but this job is based from Albuquerque, NM.



Cost Comparison

Cost of	Neosho, MO	Albuquerque, NM
Loaf of Bread	\$3.54	\$3.82
Gallon of Milk	\$2.22	\$2.39
Gallon of Gas	\$3.19	\$3.15
3 bd/2 bath/ 2000 sq ft	\$319,900	\$325,000



Zillow

Save Share Hide More

\$319,900 3 bd | 2 ba | 2,057 sqft

2010 Bogey Ln, Neosho, MO 64850

● For sale | Zestimate®: **\$303,000**

Est. payment: \$1,889/mo ⓘ [Get pre-qualified](#)

[Request a tour](#)
as early as today at 12:00 pm

[Contact agent](#)

[Overview](#) [Facts and features](#) [Home value](#) [Price and tax history](#)

Single family residence

Central gas, forced air

Central air

2 Attached garage spaces

10,454 sqft

\$156 price/sqft

Buy

Albuq

INTO
N
TION



Save Share Hide More

\$325,000 3 bd | 2 ba | 1,970 sqft

6217 La Joya Pl NW, Albuquerque, NM 87120

For sale | Zestimate®: **\$329,262**

Est. payment: \$1,973/mo | Get pre-qualified

Request a tour
as early as today at 11:30 am

Contact agent

Overview Facts and features Home value Price and tax hist >

Likely to sell faster than 92% nearby.
Schedule a tour

- Single family residence
- Built in 1978
- Central, forced air, natural gas
- Central air, evaporative cooling

Bibliography



https://www.reddit.com/r/epidemiology/comments/hjzgsr/day_in_the_life_of_an_epidemiologist/

<https://www.indeed.com/jobs?q=epidemiologist&l=&from=searchOnHP&vjk=e7cba9e82f2b63d2>

<https://www.cdc.gov/>

<https://www.payscale.com/cost-of-living-calculator/Missouri-Neosho>

https://www.zillow.com/homedetails/2010-Bogey-Ln-Neosho-MO-64850/2067376626_zpid/

https://www.zillow.com/homedetails/6217-La-Joya-Pl-NW-Albuquerque-NM-87120/6680323_zpid/

<https://www.publichealthonline.org/epidemiology/#:-:text=of%20%2478%2C290%20annually.-,Inside%20The%20Lab%3A%20A%20Day%20In%20The%20Life%20Of%20An,collecte&d%20and%20presenting%20the%20findings.>

